

The Emanuel Synagogue



1919 - 2019

*Honoring the memory of
those who came before
enabling us to have reached
this significant milestone.*

Dr. Jay D. Smith, Andrea, Eric, Ira



The Emanuel Synagogue Centennial Tribute Book



**160 Mohegan Drive
West Hartford, CT**

Professional Staff

Rabbi David J. Small

Cantor Sanford Cohn

Moshe Pinchover, Ritual Director

Rabbi Gerald B. Zelermeyer, Emeritus

Rabbi Philip Lazowski, Emeritus

Joyce Hyde, Executive Director

Barbara Fink,

Director of Youth and Family Learning



Proudly Celebrating 100 years of The Emanuel Synagogue

May The Emanuel go from strength to strength!



Your Centennial Senior Staff:

Rabbi David J. Small Rabbi Emeritus, Philip Lazowski Hazzan Sanford D. Cohn

Ritual Director, Moshe Pinchover

Joyce E. Hyde, Executive Director Barbara L. Fink, Director of Youth & Family Learning

EMANUEL BOARD OF TRUSTEES

2018-2019

President: Elysa Graber-Lipperman

1st Vice President: Melvin Simon

2nd Vice President: David Bomzer

3rd Vice President: Fred Spaeth

Treasurer: Lisa Behan

Assistant Treasurer: Mark Luster

Secretary: Andrea Goldenberg

Assistant Secretary: Hilda Slivka

Chair of the Board: Sheila Silverman



Jeff Adler

Mitchell Jaffe

Jeffrey Cohen

Llyn Kaimowitz

Joshua Cohen

Michael Kamins

Fay deHaas

Tammi Kraushaar

Amy Dembo

Susan P. Kurtis

Meyer Frankel

Lisa Levy

Peter Graber-Lipperman

Ken Malley

Rona Gollob

Reesa Olins

Jackie Isaacson

Ken Simon

EMANUEL BOARD OF TRUSTEES
LIFE MEMBERS

Cora Altschuler	Joseph Bacher
Stephen Barshay	Bruce Bergman
Laura Berlin	Lawrence Brick
Sydney Elkin	Benjamin Engel
Barry Feigenbaum	Daniel Fine
David Harris	Faith Helene
Ira Henowitz	Michael Krinsky
Michael Levine	Seymour Melnick
Alan Mendelson	Donald Miller
Alan Parker	Michele Parker
Joanne Pasternack	Harry A. Rosenfield
Lawrence Rustin	Philip Schlossberg
Janet Selden	Anne Shemkovitz
E. Mark Siegal	Gerald Silverman
Sheila Silverman	Elaine Smith
Howard Smith	Jay Smith
Carolyn Topol	Francene Weingast
Jeremy Weingast	Ellen Weingold
Gail Weinstein	Raymond Weinstein
	Marsha Wolfberg

A Message from Rabbi David J. Small

***L'dor Vador*-- from Generation to Generation: For The Emanuel Synagogue in our Centennial Year**



In 1919, just past the Great War, our ancestors, who had taken root on these shores—
Where people could live, safe, peaceful and free

Work hard, prosper and achieve dignity
And take part in building the American nation—
Founded a modern Jewish Congregation.

A Synagogue destined to do very well:
Its name, “God is with us!—The Emanuel.”

A community built to help people thrive, celebrate milestones of being alive
Engage young and old in pursuit of their mission: To instill Torah as a living tradition.

Impart Jewish wisdom, compassion and joy, for every adult, and each girl and boy
Transmit the teachings of the Talmudic Sage in a voice that would speak to a brand new Age.
Elevate spirits, offer solace through sorrow, and inspire hopes for a better tomorrow.

On this great occasion we look back and give thanks
To the past generations, who, each in their ranks,
Stepped up and created this Sacred Community.
We honor their work with a sense of humility.

And to our Creator we offer thanksgiving
For our beautiful heritage and the great gift of living.

Grant us insight and courage, like those who came before
That The Emanuel may flourish-- *L'dor vador!*

A Message from Rabbi Emeritus Gerald B. Zelermyer



THE EMANUEL @ 100

Happy Century, The Emanuel!

No! Come on! Too trite an expression for an institution!

Izzy Dubrow was a *MEZUZAH*-like fixture on a Saturday or a Holiday. Before you could enter for a service, he would grip your hand or provide a smooch. Before you ever got to the mezuzah, you had to get past Izzy.

One day I said, “Izzy, *you* are an institution!”

“What did you say,” he flashed. “I belong in an institution?”

The Emanuel is no ordinary institution. It is a history lesson. Its present location on Mohegan has been the address for nearly fifty years. But bricks alone do not tell the story.

Rabbi Jonathan Sacks, in his Exodus commentary, defines the essence of a sanctuary. He points to a phrase the great *RASHI* stresses toward the close of the Second *TORAH* Book.

As Israelites embarked on their desert trek, they stopped more than forty times in a span of forty years. Yet, *RASHI* insists, every place they set up camp was called a *MASÁ*, or journey. Existentially, then, wherever we are, whether we are stationary or in actual motion, is called a journey.

The same applies to The Emanuel's first century. One-sixty Mohegan is today's Headquarters. Yet, its walls are more than an attractive piece of real estate.

The walls testify for generations of youngsters and oldsters sounding out their *TROPES* at the *TORAH* parchment...

The walls enclose the space where glass has been shattered at countless *CHUPAH* ceremonies...

The walls have overheard newborns named for forbearers or last words to frame poignant memories at the time of loss...

The walls have contained the *SHOFAR* blasts of *TEKIAH GEDOLA* at the end of *YOM KIPPUR* and *OSEH SHALOM* punctuates prayers on a normal day.

The walls are a concert hall for *NUSACH* chant and a theater for the quiet – sometimes raucous drama reenacted in our journey through the Jewish year.

Yes, those walls are the spiritual asset an Emanuel Century celebrates, not merely tabulates.

We love the campsite. We treasure its role in our emotional and spiritual coils.

We are a distinct breed all right. We are called *THE EMANUEL!*

Heske and I, Gideon and Michelle, Salo and Lisa, and our grandkids, Max, Ben, Noa, Joshua, Lila, and Jacob are thrilled to be in the mix.

As an old adage urges: ONWARD AND UPWARD!

RABBI "Z"

Daytona Beach Shores, Florida

A Message from Rabbi Emeritus Philip Lazowski



Life experiences make us wiser, more tolerant, more profound, and more sensitive to the aspects of life that matter most. To us, as Jews, the synagogue is what matters most.

The Jewish people survived the destruction of the Temple because the synagogue had been prepared to take over the entire burden and carry it onward for generations to come.

The synagogue is the greatest practical achievement of the Jewish people in their entire history.

May the Almighty guard our synagogue and may our prayers be answered for hundreds of years to come.



GREETINGS FROM HAZZAN SANFORD COHN

100 years! That's quite a milestone for The Emanuel Synagogue. And to think I have had the *z'chut* ("privilege") to lead this congregation in prayer for one-fifth of that time! It doesn't feel like such a long time--until I teach a Bar/Bat Mitzvah student who is the child of a couple at whose wedding I officiated!



I have been a link in the chain of a rich musical heritage at The Emanuel, beginning with Hazzan Paul Discount, a highly regarded cantor and composer of liturgical music, through the incomparable Hazzan Arthur Koret. His successors, Hazzanim Don Gurney and Thom King, maintained Koret's high standards of synagogue music, including organ and choral accompaniment.

During the last two decades, we have seen changes in musical styles and tastes. Whereas once congregants found spiritual satisfaction in listening to a frontal style of liturgy, today we emphasize congregational participation through singing together and encouraging well-trained laity to lead us in prayer.

What will The Emanuel's services sound and look like in another hundred years? I would not even venture a guess. But as long as this congregation continues to attract and retain highly trained *hazzanim* to lead us in prayer, we can look forward to another century of top quality liturgical music.

The *Arts* at The Emanuel

*We Honor Our Centennial and
Hazzan Sanford Cohn
On His Retirement After 20 Years*

**A Musical Celebration!
November 17, 2019**

With our Cantors Past & Present
And Some Special Friends:

Hazzan Sanford Cohn
Hazzan Gideon Zelermyer
Hazzan Thom King
Hazzan Don Gurney
Hazzan Michael Zoosman
Hazzan Laura Bresnick
Jacob Greenberg
and Featuring Hazzan Joseph Ness
and his Orchestra



Honoring Emanuel's 100th Anniversary with a Metric Centennial Bike Ride

Sunday, July 14th

We will be biking to current and former sites
associated with Emanuel's 100 years
(starting and ending at Emanuel)

Emanuel Cemetery, Wethersfield

Emanuel, Woodland Street, Hartford

Beth Shalom, Cornwall Street, Hartford

Beth Hillel, Bloomfield

Beth Hillel Cemetery, East Granby



Event Sponsored

by

Rona Gollob



Centennial Events

Shabbat Services

May 3-4



Community Service Day



May 19

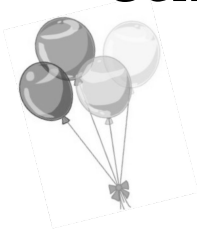
Metric Centennial Bike Ride

July 14



Centennial Celebration

September 15



Cantors Concert

November 17



A Message from President Elysa Graber-Lipperman

One hundred years ago, our founders established a synagogue that would lend a modern interpretation to religious tradition and observance. I believe these forward-looking thinkers would appreciate how we strive to make the synagogue relevant and meaningful to the lives of members of our community today while simultaneously preserving authenticity.



After recovering from the initial shock of seeing female officers and board members, as well as women on the *bimah* wearing *tallitot*, I imagine that our founders would be extremely pleased to see all of us praying, learning, celebrating, socializing, and eating together. I know that our founders would be *kvelling* while they observed our multi-generational community interacting with each other and our new cherished members.

As you may know, each letter in the Hebrew alphabet has a numerical value. The Hebrew letter having the numerical value of one hundred is *Kof*. *Kof* happens to be the first letter of the Hebrew word *kehillah* which is translated to mean congregation or community. Connecting one hundred and *kehillah* through the letter *Kof* brings to mind the importance of celebrating our incredible community while we celebrate our Centennial.

Todah Rabah to all of the members of our community who make The Emanuel a very special place. Your time, devotion, enthusiasm, and support are sincerely appreciated. Your commitment to our community assures the longevity of The Emanuel for generations to come and connects you directly to the individuals who shared their vision one hundred years ago.

L'Shalom,

Elysa L. Graber-Lipperman
President

*A Very Special Thank You
to our Sponsors*

Gold

Elysa and Peter Graber-Lipperman

Silver

Anonymous

Dr. Louis and Trudi Brown

Rona Gollob

Peggy and Alan Mendelson

Drs. Regina and Donald Miller

Michele and Alan Parker

Gail and Raymond Weinstein



A MESSAGE FROM BARBARA FINK, DIRECTOR OF YOUTH AND FAMILY LEARNING

It is a privilege to celebrate The Emanuel Synagogue's 100th Anniversary. When I think about a synagogue thriving for 100 years, I think about a chain that links our past to our future, *L'dor Vador*: from generation to generation. It is an honor to be the one that connects our past to our future.



Each day when I walk into the school wing, I am literally surrounded by our past. We have pictures of every graduating high school class hanging on our walls. These pictures serve as a physical reminder of where we have been and the rich tradition that we hold onto so tightly. One of the amazing things about our Emanuel *kehilah* is that we have families with multiple generations that have learned here. We can see the pride on grandparents' faces when their grandchildren get up to lead a prayer on Shabbat or read Torah for the first time in a family service. That is something that is truly special and unique to us.

Our founders envisioned a chain connecting past generations to future ones. I do not take my role in this chain lightly, for I have a great responsibility to create engaging and meaningful learning opportunities for our children and families because they are the future. I believe with all my heart that by creating positive Jewish experiences our chain will remain intact.

We strive to bring Judaism to life and let the words of the Torah come off the page. We create programs such as "A Haunted Shul" for our students to fight the villains of the Torah just as the ancient Israelites did. We learn Hebrew through movement and build the city of *Shushan* out of Legos.

We create a safe space for our parents and their tweens to have open dialogues with each other at a time when communication is not always at its best.

We bring in amazing early childhood educators who give our youngest learners their first connection to Judaism. We create a matzah factory in the *shul*, and we go to Build-A-Bear Workshop in the mall to make *shema* bears that sing in the child's or parent's voice. We engage our teens in youth groups and JTConnect, and we do *Havdalah* at Hartford Wolfpack games.

We show our kids that living with Jewish values does not only happen in the synagogue building, but in their everyday lives. We encourage our kids to look at what needs to be fixed in the world and create projects to really *l'taken et haolam*- repair the world.

I look at our children and know that we have a great future ahead of us. May we go from strength to strength.

B'Shalom,

Barbara Fink

Director of Youth and Family Learning





“Grief” by Beth S. Goldberg

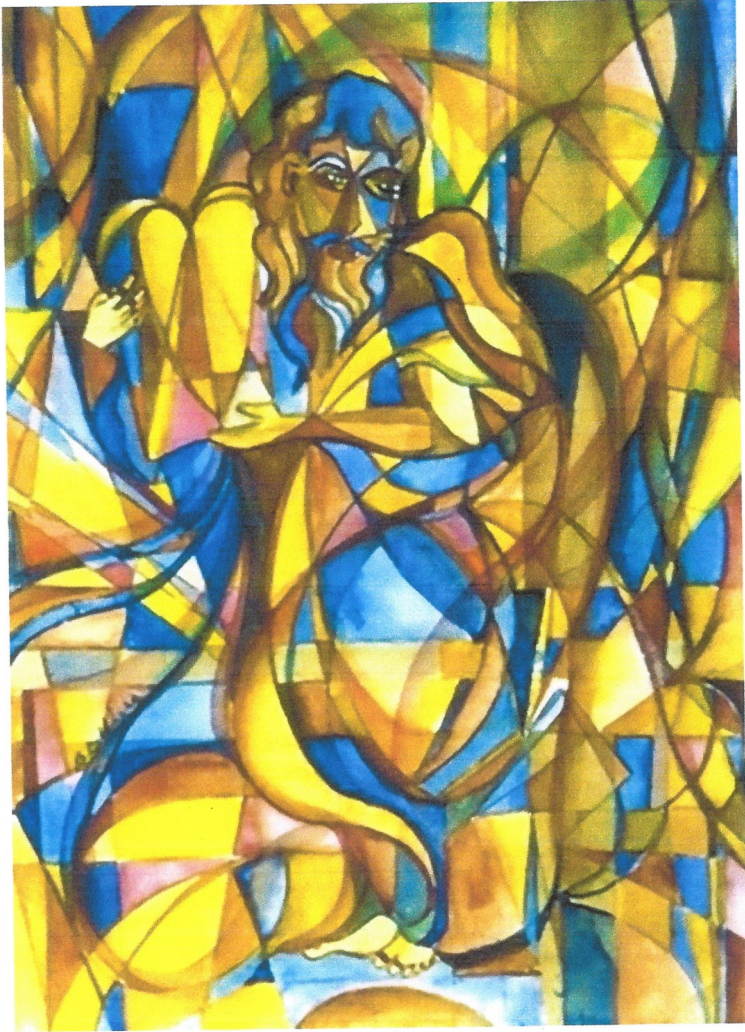
As long as we live, they too still live, for
they are now a part of us.

We remember them.

In memory of our beloved husband,
father, and grandfather

Benjamin Goldberg

Abraham I. Segal,
Judith Sandra Lee and Irwin Duftler



“Moses” by Beth S. Goldberg

The Torah is truth and the purpose of knowing it is to live by it. (Maimonides)

Beth S. Goldberg

Murray, Ilene, Gerald, Jeffrey, Ashley,
Dustin, Rachel, Joshua, Tovah & Hanna

The History of The Emanuel Synagogue (1919-2019)

Edited by Dr. Hilda Slivka

Compiled from histories written by
Dr. R. Leonard Kemler z"l and Dr. Leon Chameides
and archives from The Jewish Historical Society of Greater Hartford

HISTORY - PART I of V

In 1919, six men, Louis H. Katz, Louis Y. Gaberman, Max Blumenthal, David T. Weinerman, Barney Rapaport and Herman P. Kopplemann, met in Hartford to discuss their vision: the formation of a new synagogue. It was to be the first Conservative synagogue in Connecticut. Their objective was to establish a Jewish congregation prepared to accept a modern interpretation of age-old ethics and observances; to blend conventional traditions of the past with a modern approach, appealing to younger people. The synagogue would provide prayer both in Hebrew and English, sermons in English, congregational singing and a social hour in line with the modern tendencies of American Jewry. Sabbath services would be on Friday night, not necessarily at sunset. The founders named it Congregation B'Nai Israel, but soon the name was changed due to an already existing congregation of the same name in New Britain. Within the year, the name became The Emanuel Synagogue.

A Remarkable First Few Years

This galvanized group quickly established a congregation that worshipped at the now long-gone Pleasant Street Talmud Torah. Rabbi Leon Spitz, a chaplain on leave from the United States Army, was recruited by the Jewish Welfare Board to assist. By Rosh Hashanah of 1919, this new-found congregation acquired its first real home, the former North Methodist Episcopal Church on Windsor Avenue (now Main St.) in Hartford for \$30,000. The renovated and enlarged building, dedicated on March 7, 1920, could accommodate 700 worshippers.



In succession, Rabbi Abraham Nowak (1920-1922), was hired as the first fulltime spiritual leader. Cantor Weisfield engaged for only one year, performed the duties of cantor, religious school teacher, and choir director. A large tract of land was purchased in Wethersfield to serve as a cemetery. Sisterhood was organized with Miss Annie Fisher, a remarkable woman who was a distinguished and highly recognized and honored Hartford educator, as its first president in 1919. Annie Fisher, who has a Hartford school bearing her name, organized and prepared teachers for the religious school. The Sisterhood became an active, participatory group in synagogue matters and financially supported the Hebrew School. A Brotherhood, whose activities were a bit less active in the early days, was established two years later with Louis H. Katz as chairman. In 1921, the General Assembly of the State of Connecticut passed House Bill 1050 incorporating The Emanuel Synagogue as an official religious congregation. In three years, The Emanuel had become a full-fledged flourishing congregation! In 1927, morning and evening minyan services began and have been sustained uninterrupted since.



The Emanuel Synagogue, Woodland Street

A Milestone Occasion
to honor
**The Emanuel Synagogue
at 100**

We feel gratitude for the generations of family, clergy, lay leaders and congregants who built a strong foundation from which we thrive into the future.

The Kemler Family
The Kaufman Family

Thanks to
The Emanuel Synagogue
for years of memories.

Mazel Tov for thriving 100
years!

Saul & Joanne Pasternack

**We are happy to call The Emanuel our
second home for the past 30 years,
and look forward to sharing
many more joyous occasions
with our Emanuel family.**

**Happy 100th ...
You don't look a day over 75!**

***Paul, Sharone, Jacob, Izzy, and
Joey Kornman
Irene Frisch***

*Congratulations to The Emanuel Synagogue
On the Centennial!*

Hazak Hazak V'Nithazek

חזק חזק ונתחזק

"Be strong! Be strong! And let us strengthen one another!"

Ben and Joan Engel

Miriam Engel

Albert, Amanda and Olivia Eleanor Engel

The Emanuel has been our spiritual home for over 40 years and through Chavurah Aleph has graced us with the friendship of wonderful friends.

It was the home for our dear departed parents, Dorothy and Jerry Samuels.

Mazal Tov on the first 100!

Beth and Cary Lakenbach

Apple Valley Hardwood

Specializing in Hardwood Floor
Installation, Refinishing, Repairs & Staining
Competitive Prices
Free Estimates

Travis Woodward & Laura Rothkopf
860 518-1103

<https://www.facebook.com/AppleValleyHardwood/>

The Rothkopf Family

Imperial Trophy Center

Specializing in Custom Trophies, Plaques,
Sports Awards, Corporate Awards,
Fantasy Sports Awards & Gifts
Custom Engraving
Embroidery & Silk Screening

Laura Rothkopf
Dianne Rothkopf

256 Main St.
New Britain, CT 06051
860 225 3999 Imp trophy@aol.com

Emanuel Synagogue

Testimony to Our
Enduring Heritage.

Marcia and Michael Krinsky

It has been our great joy to celebrate our simchas with our Emanuel family and to have been part of Emanuel's first hundred years!



May we go from strength to strength!

The Graber-Lipperman Family
Peter, Elysa, Amelia, Jacob, and Nathan



**Mazel Tov on 100 years
of joyful community!**

We feel blessed to have been part of
the congregation for almost 40 years.

May The Emanuel be endowed with
a vibrant future.

*The Kleinmans
Joel and Naomi
Aaron & Elena, Leah & Rachel*

With love and
gratitude for our
Emanuel
community,
we extend a hearty
Mazel Tov in this
centennial year.

*Saul & Anne
Shemkovitz
and Family*

**Best Wishes
Cantor Cohn and
many thanks for
your beautiful
music, guidance,
and friendship.**

*Lisa, John, Molly,
and Jenna Behan*

We salute and offer a heartfelt
Yashir Koach to the thousands of lay
leaders and volunteers over the past 100
years who have spent countless hours and
energy to promote the vibrancy of
The Emanuel Synagogue.

Lawrence H. Rustin	1967-1969
David R. Harris	1977-1979
Joseph H. Bacher	1979-1981
Raymond S. Weinstein	1985-1987
E. Mark Siegal	1987-1989
Hon. Sydney W. Elkin	1991-1994
Donald M. Miller, PhD	1994-1996
Benjamin Engel	1996-1998
Dr. Michael M. Krinsky	1998-2000
Barry S. Feigenbaum	2000-2002
Dr. Jay D. Smith	2004-2006
Dr. Michael S. Levine	2006-2008
Alan S. Parker	2008-2011
Gail Stein Weinstein	2011-2013
Ira Henowitz	2013-2015
Dr. Sheila Silverman	2015-2017
Elysa Graber-Lipperman	2017-2019

**“Worship is a way for
seeing the world in the
light of God.”**

~Abraham Joshua Heschel

**Happy 100th birthday
Emanuel Synagogue!**

**Your light has shown for
100 years. May it last for
many more centennial
celebrations.**

Tammi Kraushaar

**Congratulations
on 100 years of
Serving Jewish
Families.**

***Cora and Michael
Altschuler***

**Congratulations to
The Emanuel Synagogue
on 100 Years!**

**With Love,
The Kaizer Family**



COMPLIMENTS OF

SUSAN R. FIERBERG

&

HOWARD SCHEINBLUM

Mazel tov to our
Emanuel family on this
special milestone

*Hal and Judy Mooney
Steven Mooney
Josh and Melissa Mooney Wikoff
Avital & Benjamin*

In time of need
and time of joy

Emanuel

is always there
for us.

*Jack and Mimi
Bassok*

Congratulations
and Good Wishes
to **The Emanuel
Synagogue**
on Celebrating
the Centennial.

Warmly,
Joyce E. Merkin

100 Years Strong

Growing our family
at the Emanuel
Synagogue has been
a priceless
experience.

*Dr. Sheila Silverman,
Shira & Talia Feldman*



Congratulations to
The Emanuel Synagogue
on 100 Years!

Our Spiritual Home for 36
Years.

Francene and Jeremy Weingast

Congratulations to
The Emanuel
on 100 years.

Sylvia & Harry Rosenfeld

Linda & Martin Stein

Julie & Evan Shiff

Avery and Abbie

Angela & Jon Stein

Madelyn and Freddy



Harris, Azia & Strauss Insurance Agency

*Yasher Koach on 100 years!
May we have at least 100 more!*

*Proud to be a part of this Kehillah!
Thank you for all you have done for the
Greater Hartford Community!*

David and Merle Harris

Jeff and Becky Azia

Scott and Rebecca Selig

433 South Main Street, Suite 324, West Hartford, CT 06110 - 860-521-8870

www.hasinsurance.com



FIERSTON
FINANCIAL GROUP

fierston.com

Proud to Support

The Emanuel Synagogue

*Congratulations on
100 years strong!*

29 South Main Street - Suite 302 West Hartford, CT 06107
Phone: 860.521.2100 Fax: 860.521.0585

HISTORY - PART II of V

The Woodland Street Synagogue

In 1922, Rabbi Morris Silverman became The Emanuel Synagogue Rabbi. Exponential growth followed, requiring the need for more space. In 1926, a functioning Hartford farm on the east side of Woodland Street was purchased for \$78,750 as the site for the second Emanuel home. A portion of this property was sold which allowed the remaining parcel to be used to build an inclusive new synagogue. Building plans included areas for services, religious school classes, social congregating areas, and a kitchen. On November 5, 1927, the new Emanuel Synagogue was dedicated at 645 Woodland Street, in Hartford. It was then described as one of the finest religious structures in New England. Because a single central structure for Hartford's Jewish activities did not exist, The Emanuel became the meeting place for multiple Jewish organizations - providing a home for religious, cultural and social functions.

Rabbi Silverman's Impact

During his 38-year tenure, Rabbi Morris Silverman developed innovative ideas and programs including a Junior Congregation, Bar Mitzvah Club, a Bat Mitzvah Club, athletic programs, an inter-faith, interracial Boy Scout Troop, and The Emanuel Literary Club. Religious and social events centered around the thriving Emanuel. There was an active Young People's League which performed yearly follies, the renowned Sisterhood's Annual Ball and numerous college weekend programming. The Emanuel had become a community institution whose High Holiday services required three locations, including Hartford's Weaver High School, to accommodate all its worshippers.



The first publication of the weekly newsletter was in 1928. The first *Bat Mitzvah* was encouraged by Rabbi Silverman in 1930.

As a strong force in Hartford fostering racial and religious tolerance, Rabbi Silverman broke down religious barriers that insulated people from their brothers and sisters in other religious communities and gained statewide respect for his actions on civil rights. He had Christian laymen address organizations in the congregation and the Rabbi served on the State Interracial Commission. In addition, Rabbi Silverman achieved national and international recognition when he compiled and edited numerous liturgical books still in wide use today.

The Depression Years

The synagogue remained a stable center for Jewish life during the 1930s, when money was scarce. The Rabbi and the congregation were able to persevere as most members continued to educate their children and provide the financial support for maintaining rituals. Friday evening services were a well-recognized event drawing an average of 800 people. Rabbi Silverman published the new “Sabbath and Festival Prayer Book” during this time. The rabbi’s wife Althea Silverman, produced programs, scripted pageants, wrote children’s books and wrote a book and play, “The Jewish Home Beautiful” which is performed in different formats to this day. Max Schwartz occupied the pulpit only for *Selichot* and High Holiday services, and Rabbi Silverman doubled as rabbi/cantor during all other services.

The Post War Years

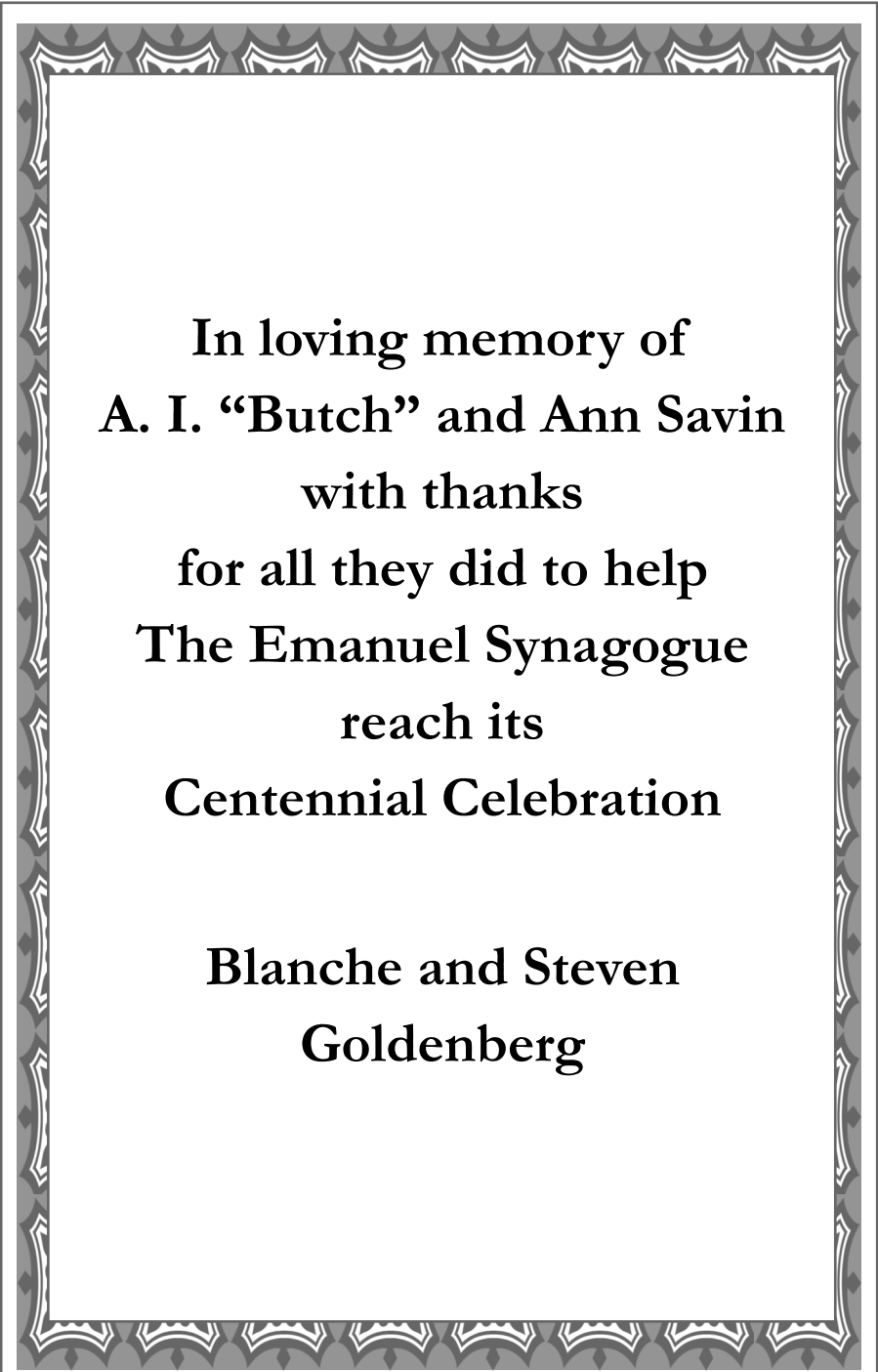
The post war years introduced free membership for service men, and a Mr. and Mrs. Club for young married couples. High Holiday services required services to take place in the Sanctuary, the Vestry and at Weaver High School in Hartford. In 1949, 3,000 adults and 500 children had to be accommodat-



ed for services. In 1948, the first ritual director Mr. Joseph Buechler, was hired. There have been many since then. Today, Mr. Moshe Pinchover is the Ritual Director. He oversees all ritual procedures and artifacts and helps train members for Torah and *Haftorah* readings.

**In memory of
Rabbi Hans
and
Mrs. Alma
Bodenheimer**

*By
Their Family*



**In loving memory of
A. I. “Butch” and Ann Savin
with thanks
for all they did to help
The Emanuel Synagogue
reach its
Centennial Celebration**

**Blanche and Steven
Goldenberg**

We thank our ancestors who
possessed the vision to build
The Emanuel Synagogue.

We send *Mazel uv'racha* to
current congregants, staff,
and loved ones.

We look forward to our future,
including adventures and
challenges yet to be defined.

*Andrea & Steven Goldenberg,
Kira & Rachel, and Jeremy*



**Mazel Tov to
The Emanuel!**

1919-2019

With Love,
The Wolfberg Family

THANK YOU
to
THE EMANUEL SYNAGOGUE
CLERGY *and* CONGREGATION

For making

The Emanuel

Our Spiritual Home

HILDA SLIVKA RALPH ROSENBERG

JAKE *and* JULIA

**A Prayer for The Emanuel Synagogue
At 100 Years Old**

As we ask You to bless us, O Lord,
Help us, we pray, to be a blessing to all whose lives touch ours.
As we ask You to be gracious to us, O Lord,
Help us we pray, to be gracious in word and deed.
As we ask You to grant us peace, O Lord,
Help us, we pray, to bring peace and harmony into our lives
And into the lives of all Your Children.

Barry, Lisa, Melanie & David Feigenbaum

Mazel Tov to The Emanuel Synagogue on 100 years!
Looking forward to the next 100!
Wishing Cantor Cohn nothing but the best in this next
chapter!

Barbara, Jonathan, Hannah, and Mason Fink

*In gratitude for all the ways The Emanuel
family enriches our lives!*

*Sincerely,
Frederick Spaeth & Eliana Tsukroff*



Cary Lakenbach
Chair of the Board

Carolyn Gitlin
First Vice Chair

Dana Keller
Laurie Mandell
David Rosenthal
Gary Starr
Vice Chairs

Anne Martha Pitegoff
Treasurer

Daniel Kaufman
Assistant Treasurer

Ted Zablotzky
Secretary

Cyral Sheldon
Assistant Secretary

Eric M. Zachs
Chair Emeritus

Benjamin Adler
Todd Berman
David Brandwein
Shari Cantor
Jessica Fish
Kathy Fishman
David Gelles
Rona Gollob
Jonathan Hoffman
Alan Parker
Greg Patchen
Stephen Rabb
Richard Rubenstein
Lois Siegal
Tracy Taback
Robert K. Yass
Board Members

Leigh Newman
Ex-officio

Howard Sovronsky
President and CEO

The mission of the Jewish Federation of Greater Hartford is to welcome, build and perpetuate Jewish life in Greater Hartford, in Israel and around the world through the values of Tzedakah (righteous giving), Tikkan Olam (improving the world), and Klal Yisrael (unity of the Jewish people).

THE EMANUEL SYNAGOGUE: 100 YEAR ANNIVERSARY

It is hard to think about the Jewish community of Greater Hartford without recognizing the wonderful and vital role The Emanuel Synagogue has played in building and growing our vibrant community.

The Emanuel Synagogue, the first Conservative synagogue in Connecticut, was formed six years after Solomon Schechter established United Synagogue of America. What a proud moment it must have been for those early congregants who participated in the evolution of such a major event in Jewish history.

As a young boy growing up in a Conservative synagogue in New York, I became intimately connected to the Silverman Prayer Book. It wasn't until I arrived here in Connecticut that I learned about its author, Rabbi Silverman, one of the early spiritual leaders of the Emanuel. What honor and pride he must have brought to the congregation recognizing the incredible impact he had guiding the spiritual journey of so many American Jews.

He was not the first nor the last super star associated with The Emanuel. The Federation is so very grateful for the many ways the members of the Emanuel community, along with their highly respected clergy and talented and thoughtful lay leaders have enhanced Jewish life in Greater Hartford. We are especially thankful for the present Chairman of the Federation Board, Cary Lakenbach, who is a proud member of this warm, welcoming, and caring congregation.

May The Emanuel go from strength to strength and continue for another 100 years in sustaining Jewish life here in our community.

President and CEO
Jewish Federation of Greater Hartford

Chair of the Board
Jewish Federation of Greater Hartford

Every Generation  Shapes Federation

Jewish Federation of Greater Hartford, Zachs Campus, 333 Bloomfield Ave, Ste C, West Hartford, CT 06117 • (860) 232-4483 • jewishhartford.org



March 5, 2019

Ms. Elysa Graber-Lipperman
Rabbi David Small
The Emanuel Synagogue
160 Mohegan Drive,
West Hartford, CT 06117-1499

Dear Ms. Graber-Lipperman and Rabbi Small,

It gives us great pleasure to send you warm greetings and wishes of Mazel Tov on behalf of United Synagogue of Conservative Judaism (USCJ) on the occasion of your centennial anniversary.

For 100 years, The Emanuel Synagogue has served as a kehilla kedosha, a sacred community, and the entire Hartford Area Jewish community has benefited by your presence.

Your congregation is blessed to have had Rabbi and Cantors, lay leaders, and professional staff, who have committed their sacred time to lifelong learning, to caring for others, to performing acts of social justice, to participatory prayer and to inculcating a love of Israel and the Jewish people in your community.

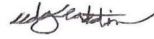
USCJ is the network of Conservative synagogues ensuring there are thriving centers of Jewish practice across North America. We envision and pursue an authentic and dynamic Judaism that inspires today's and tomorrow's generation of Jews to seek meaning, find connection, and experience wholeness (shleymut) in a world that is complex and ever evolving. The Emanuel Synagogue embodies these values. Your community has adapted over the past 100 years and you have applied the values and essential ideas of the *Torah* in ways that are most meaningful for each generation.

We take great pride in our partnership with The Emanuel Synagogue and look forward to many years of continued collaboration. Together, we demonstrate what an authentic and dynamic Judaism looks like, inspire people to be a part of it, and advance its critical role in the world.

We wish you B'hatzl'cha as you embark on your next chapter. May The Emanuel Synagogue continue to go from strength to strength.



Leslie Lichter
COO



Ned Gladstein
President

HISTORY - PART III of V

Mohegan Drive, here we come.

An increasing migration of Jews occurred—moving from Hartford to the suburbs—in the post-war years. In 1952, several of The Emanuel’s members left to establish a new Conservative synagogue, Beth El Temple in West Hartford. Families did not want to travel far for the several days of religious school and more space was needed. It was ultimately decided a new education facility would be built, instead of adding onto the Woodland Street structure. In 1956, a parcel of 10.5 acres of land was acquired in West Hartford. In 1959, The Emanuel funded and built a new religious school and auditorium, at 160 Mohegan Drive in West Hartford, for its 700 students. Prior to this, religious classes had been held at four different locations. The new structure finally brought all the religious students under one roof. The school building was dedicated to Rabbi Silverman. Enrollment necessitated a full-time education director. Mr. Alexander Kaminetsky was enlisted for this role in 1950, followed by Mr. Alfred Weisel in 1952, who was instrumental in the growth and development of The Emanuel religious school. The school also enlisted principals, the first being Mr. Jacob Dubitsky, followed by Mr. Jechiel Lieberman and then Mr. Jacob Stein (1947-1965). Rabbi Hans Bodenheimer was also a member of the school faculty.

More recent education directors included Mark Levy in 1987, who used puppetry to relate to the student body. Judy Fox served as Director of Education from 1994- 2015. As a family educator, Mrs. Fox was responsible for award-winning religious school programming centering around family education, programs for adult education as well as pioneering Jewish education for children with special learning needs. Our current Director of Youth and Family Learning, Barbara Fink, provides rich, meaningful, hands-on ways for our children, teens, and families to engage with Jewish learning, prayer, and *kehilah*.



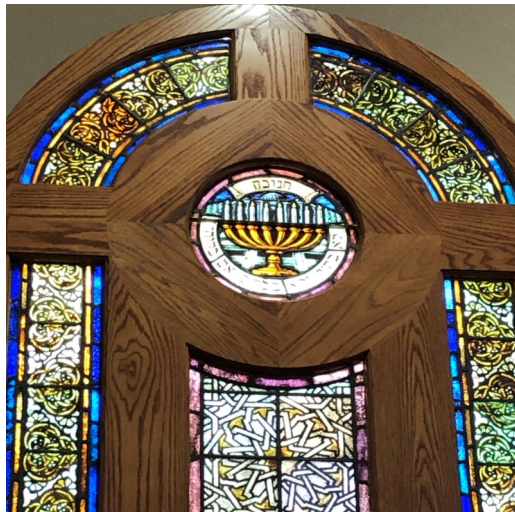
Emanuel's Home Today



The new religious school on Mohegan Drive also contained a large auditorium. The school and auditorium were utilized for High Holiday services beginning in 1959. Services continued to be held in both the Woodland Street and the Mohegan Drive locations for several years. Not without emotional difficulty, it was decided to vacate the Woodland Street location. After many memorable years, the last service on Woodland Street was held in 1967. The stage in the school auditorium became a

permanent *bima*, and the Emanuel Synagogue moved to its third and current home on Mohegan Drive. Eventually, a sanctuary and chapel were added to the school to complete the building now occupied by the congregation.

The sanctuary was dedicated in May 1972. At The Emanuel's 75th anniversary, the chapel and sanctuary underwent renovation that included incorporating the original beautiful stained-glass windows from the Woodland Street building. The sanctuary, Silverman Auditorium, and Koret Hall were once again refashioned in 2012-2014. Adding new prayer books and *Machzorim* were also part of this successful Capital Campaign.



מזל טוב

On 100 wonderful years of service to our community.
May you go from strength to strength!

Joyce, Myron, David & Jeff Sturm

With gratitude to *Adonai* for the success of our first century, may **The Emanuel** family continue to build a future that fulfills our many blessings.

Suzanne Connell (Executive Director 1998-2010)
and Myles Connell

CONGRATULATIONS TO THE EMANUEL SYNAGOGUE
ON ITS 100TH ANNIVERSARY!

WE WISH YOU CONTINUED PROSPERITY AND ANOTHER 100 YEARS!

MLK&R

Murphy, Laudati, Kiel, Rattigan, LLC


ATTORNEYS AT LAW

EXPERIENCE, EXCELLENCE AND INTEGRITY

Neil F. Murphy, Jr. | John L. Laudati | Lawrence J. Kiel | Margaret F. Rattigan | Steven M. Zelman

OFFICES IN: FARMINGTON | GRANBY | BLOOMFIELD CONTACT US TODAY: (860) 674-8296


WWW.MLKRLAW.COM



Mazel Tov
to the
100th year of

**The Emanuel
Synagogue**

The Selden Family



Congratulations to
The Emanuel Synagogue on
its first 100 years of existence
and the impact it has had on
the Hartford Jewish
Community. We are proud to
be members and to participate
in this wonderful institution.
We look forward to the next
100 years and to the continued
growth, success, and the
positive impact The Emanuel
will have on the greater
Jewish Community.



Gail & Jeff Adler

Ed & Eve Fishman

Meyer & Sheila Frankel

Joel & Deborah Kent

Michael & Marsha Kamins

Stu & Sheryl Kopel

Mickey & Joyce Libbin

Seymour & Judy Melnick



Mazel tov
Emanuel Synagogue
on your Platinum Jubilee!
L'chaim!

The Gold Family
Monica, Lee, Jack & Adam



Baram, Tapper & Gans, LLC

3 Regency Drive

Bloomfield Connecticut 06002

860-242-2221

www.ctattys.com

Congratulations to Emanuel Synagogue

On its Centennial Celebration!!

From

David Baram and Jay Gans

Attorneys:

David Baram, Joseph Tapper,

Jason Gans, David Wenc

Areas of Law Include: Commercial transactions, business entities, immigration, naturalization, employment, divorce and custody, municipal law, zoning, litigation, elder law, criminal defense, wills, probate, residential and commercial real estate, evictions, personal injury, administrative hearings, nonprofits, collections, prenuptials.

***Congratulations
on 100 years!!***

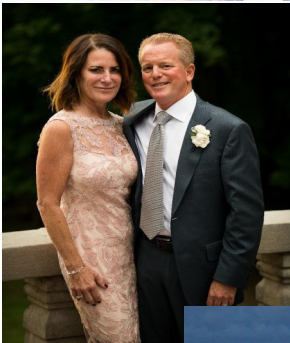
***Richard & Leslie
Weinstein
Alexis W., Avery &
Hadley Hersh***

Congratulations

**Phyllis
&
Sheldon
Nova**

The Glazier / Leopold Family congratulates The Emanuel Synagogue on the milestone of celebrating the first 100 years and our thanks to Hazzan Cohn as we wish only the best in his future endeavors.

Now in our 4th generation as part of The Emanuel community we are proud of the history of The Emanuel & the on-going contributions made to the community.



All the best to our
Shaliach Tzibur

Sandy Cohn

Enjoy new adventures in your
retirement.

Francene and Jeremy Weingast

To our beloved

Emanuel Mishpacha!

Thank you for being there for all
of the simchas, sad times, and
events throughout
our family's life!

All our love,

*Sharon, Andy, Rachel,
Zachary and Daniel Magin*

HISTORY - PART IV of V

The Rabbinic Legacy of The Emanuel

Rabbi Simon Noveck (1961-1968) followed Rabbi Silverman as the religious leader. He was known for placing great emphasis on adult education. During his tenure he took part in lectures in conjunction with other educators to teach Jewish history. Rabbi Howard Singer (1969-1982) was a rabbi of renowned teaching. He encouraged congregational participation during his lectures and sermons. He authored novels and acclaimed articles concerning modern Jewish life. His Friday evening lectures were popular and well-attended.

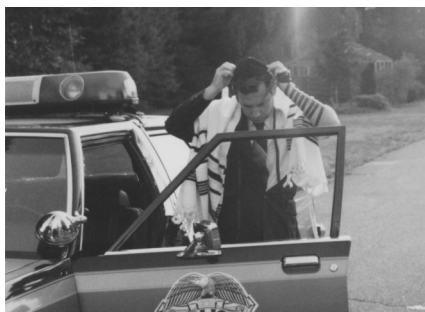
In 1983, Rabbi Gerald Zelermyer (1983-2002) became the spiritual leader of The Emanuel Synagogue. Before he could settle into his new



position, the chapel was tragically destroyed by an arsonist in August 1983. The beautiful chapel, with its stained-glass windows, and needle-pointed ark doors, was gutted. Torah scrolls were charred beyond recognition. With smoke still curling from the smoldering synagogue, Rabbi

Zelermyer led morning services on the lawn at 160 Mohegan Drive.

He eloquently expressed a need for optimism, faith, strength and the ability to forgive. In a ceremony, written for the moving occasion by Rabbi Zelermyer, seven charred Torah scrolls were buried in front of The Emanuel building beneath a sculpture depicting a Torah adorned with Emanuel's name.



Rabbi Zelermyer's tenure established a new program for family education and musical Friday evening services infused with *ruach*. He was well-known for his inspirational sermons.

Our current Rabbi, David J. Small, came to The Emanuel in 2002. An excellent teacher, he has emphasized five core values: Life-long Learning (*Talmud Torah*), Caring (*Chesed*), Social Justice (*Tikun Olam*), Participatory Prayer (*T'filah*), and Love of Israel and the Jewish People (*Ahavat Yisrael*). His many strengths include sensitive pastoral care and sincere interest in each congregant and the community at large. His devotion to societal needs and his demonstrative kindness toward all people is profound and an inspiration to everyone.

The Emanuel has two Rabbis Emeriti. Rabbi Zelermyer, whose legacy of education has had a lasting impact on The Emanuel *mishpacha*, became Rabbi Emeritus upon his retirement from The Emanuel. Rabbi Philip Lazowski, a prolific author, who served Beth Hillel Synagogue in Bloomfield for 31 years, is a much beloved and honored presence during services and life cycle events. He took over rabbinic responsibilities during Rabbi Small's sabbatical.

The Music of The Emanuel

Music has been an important entity since The Emanuel's inception. Organ playing was supported by Rabbi Silverman and approved by the congregation in 1923. Miss Annie Pratt, who was an organist at her church, quickly mastered Jewish melodies and played for religious services. The next organist, Mr. Joseph Teller, was hired in 1951. The first cantor was Cantor Paul Discount (1922-1931) and much of The Emanuel liturgical music was his compositions. Cantor Discount was an accomplished musician who mastered both the piano and the organ.



In 1948, a young choir member with a magnificent voice was asked to lead the High Holiday services. This was Cantor Arthur Koret's cantorial debut for The Emanuel. His musical leadership continued until his retirement 42 later years in 1986. He was renowned throughout the country, and he was known as a "cantor's cantor."

Respect and recognition by his colleagues earned his election as the President of the Cantors Assembly of America. He recorded albums of liturgical music. He also taught at the Hartt School of Music in Hartford.

Hazzan Don Gurney (1987-1994) was selected to succeed Cantor Koret. Cantor Gurney reflected a change in Jewish liturgical tastes. Young people no longer appreciated the dramatic, slow, contemplative, big voice of traditional *hazzanut* and preferred melodic music with a beat in which the congregation could take part.

Cantor Thom King was at The Emanuel from 1995-1997 and came to us by way of his operatic training at nearby Hartt School of Music. His mentor was his teacher, Cantor Koret. Cantor King is quoted as saying Cantor Koret "had an impact on my life -- as a teacher, as a friend, as an artist."

When Cantor King left, The Emanuel was delighted to have one of its own, Gideon Zelermyer, enhance High Holiday services, and some *B'nai Mitzvah* services, with his melodious voice. Rabbi Emil Hager z"l also performed cantorial duties during this time.

Our current cantor, Hazzan Sanford Cohn, came to The Emanuel in 1999. His enthusiasm for music inspired a junior choir, as well as an adult choir. He entertains the congregation with his concerts, and he is known to engagingly sing liturgical songs to the tune of popular music. Our services are enriched with his inspirational and meaningful leadership on Shabbat, festivals, and High Holidays. Hazzan Cohn has brought choir performances to assisted living and skilled nursing care facilities, and public venues, benefitting the greater Hartford community.



Hundreds of students and adults have been patiently taught by Hazzan Cohn to read Torah and *Megillot*, to chant *Haftarot*, and to lead services and prayers.



**PRESIDENTS of
THE EMANUEL SYNAGOGUE**

Walter Beatman	1919-1921
Saul Berman	1922-1923
Louis H. Katz	1924-1927
Louis Y. Gaberman	1928-1929
David T. Weinerman	1930-1931
Herman P. Kopplemann	1932
Barney Rapaport	1933-1945
Maurice D. Liftig	1945-1946
I. Oscar Levine	1947-1948
Jacob Schwolsky	1949-1950
Max M. Epstein	1951-1952
Milton Nahum	1953-1954
Israel Grody	1955-1956
Louis E. Nassau	1957-1959
Robert A. Weinerman	1960-1961
Arnold S. Cartin	1962-1964
Judge Leo Parskey	1965-1966
Lawrence H. Rustin	1967-1969
Dr. R. Leonard Kemler	1970-1972
Seymour Benson	1972-1975

Bernard M. Waldman	1975-1977
David R. Harris	1977-1979
Joseph H. Bacher	1979-1981
Jerome E. Caplan	1981-1983
Stewart F. Kleinman	1983-1985
Raymond S. Weinstein	1985-1987
E. Mark Siegal	1987-1989
Joan Mond Lebovitz	1989-1991
Hon. Sydney W. Elkin	1991-1994
Donald N. Miller, Ph.D.	1994-1996
Benjamin Engel	1996-1998
Dr. Michael M. Krinsky	1998-2000
Barry S. Feigenbaum	2000-2002
Brian J. Newman	2002-2004
Dr. Jay D. Smith	2004-2006
Dr. Michael S. Levine	2006-2008
Alan S. Parker	2008-2011
Gail Stein Weinstein	2011-2013
Ira Henowitz	2013-2015
Dr. Sheila Silverman	2015-2017
Elysa Graber-Lipperman	2017-2019
Melvin Simon	2019-

MAZAL TOV! Emanuel Synagogue on your 100th anniversary of dedicated service to the Jewish Community.

"The world rests on three things On Torah, on service of God, on deeds of love."
עַל שְׁלֹשָׁה דְבָרִים הָעוֹלָם עוֹמֵד, עַל הַתּוֹרָה וְעַל הָעֲבוּדָה וְעַל גְּמִילוּת הַסְּדִים:
Pirke Avot 1:2

Nancy & Rabbi Jim Rosen
Rabbi Ilana Garber & Adam Berkowitz
Dory & Rabbi Howard Sowalsky
Carmen & Cantor Joseph Ness
Rabbi Stanley Kessler & Board of Trustees



From generation to generation
and from strength to strength
may The Emanuel Family
grow and prosper.

Mark & Ellie Goldberg

*In memory of
all of those Emanuel members
who have gone before us in the
past 100 years
leaving their wisdom and
friendship
to inspire us as we go forward
with our traditions*

*“...for they are now a part of us,
as we remember them”*

Judy Silver,

proud member of The Emanuel Synagogue

*We have been honored to serve as
Presidents of*

The Emanuel Synagogue.

*May our synagogue go from
strength to strength.*

Raymond S. Weinstein

1985-1987

Gail Stein Weinstein

2011-2013

Mazal Tov to
The Emanuel Synagogue
on its Centennial Anniversary.
Thank you for always being there for
the Kurtis Family and for
welcoming the Weinstein Family.
With love,
Susan Kurtis & Craig Weinstein
and their children

Marshall and Edie Kalin

"And let them make Me a sanctuary that I may dwell among them." Exodus 25:8.

Emanuel ... our sanctuary. Warm & welcoming clergy and staff, spiritual insight and guidance from Rabbi "Z", Rabbi Small, Rabbi Lazowski, Rabbi Friedman. Three beautiful *B'nai Mitzvah*, one wonderful adult *Bat Mitzvah* ... dancing on the Bimah (and on Masada), with Rabbi Small ... Israel trip 2004 ... meaningful davening on Shabbat and daily with Cantor Cohn and Cantor Pinchover ... *Ruach* Shabbat, junior choir and adult choir concerts, awe inspiring High Holiday services ... Shabbat under the Stars led by Cantor Cohn on guitar and stories for all ages by Rabbi Small ... infamous kiddushes with old friends and new ... the warmth, the *ruach*, the positive energy that is our shul.

Emanuel...always our sanctuary, always our home.

Happy 100th Birthday!!

With Love, Jim Schulwolf and Lisa Levy,
Erik, Daniel & Sara Schulwolf

**Mazel Tov to Emanuel Synagogue
on reaching its Centennial!**

Hollis G. Dorman

Congratulations and Best Wishes
for another century

Ursula Marx and Rena Miller
Berkshire Hathaway Real Estate



FOUNDERS

TECHNOLOGY GROUP, LLC

Moving technology
in the right direction.

Founders Technology Group provides
small-medium companies with IT services
that meet the demands of their business.



860-256-8197

www.founderstech.com

The Nassau Family Celebrates The Emanuel's 100 Years

Louis E. Nassau: President 1957-58

**Rhea K. Nassau: Sisterhood President- 1954
and Choraleers**

Arthur Nassau: Bar Mitzvah – March 20, 1947

Reba & Arthur Nassau: Wedding – June 23, 1957



Happy 100th Birthday to our
Emanuel Synagogue

From the Helene Family

*Faith, Alan, Marla, Jared, Hayley,
Robin, Alex, Rebecca, Gary, Alissa,
Nicolette, Yukon, Sophia, Spencer*

Congratulations to
The Emanuel Synagogue
on its Centennial Anniversary.

Mark & Debbie Luster & Family



S. L. ZOCCO
MEMORIALS INC.



MONUMENTS
CEMETERY LETTERING
AND RESTORATION
BRONZE & GRANITE MARKERS

804 Blue Hills Ave
Bloomfield, CT 06002
(860) 242-7371 or (860) 242-5881
sal804blue@aol.com

EST. 1957

Mazel tov!

TO EMANUEL SYNAGOGUE ON ITS

100th **ANNIVERSARY!**

**THANK YOU FOR BEING SUCH AN IMPORTANT PART OF
WEST HARTFORD HISTORY!**



**NOAH WEBSTER HOUSE &
WEST HARTFORD HISTORICAL SOCIETY**

www.noahwebsterhouse.org | 227 South Main Street • West Hartford • Connecticut 06107

HOPMEADOW ANIMAL HOSPITAL

Hal J. Mooney, D.V.M.

Telephone (860) 658-1931

Fax (860) 651-7254

hopmeadowah@gmail.com

235 Hopmeadow Street
Simsbury, Connecticut 06089

Office Hours
By Appointment

THE *Copier Connection*

MULTI-FUNCTION BUSINESS EQUIPMENT
Sales / Service / Supplies

16 Orchard Street
East Hartford, CT 06108

Tel.: (860) 646-8787
Fax: (860) 291-0233

Respecting your home, your family, our environment

Nu Vision

Pest Elimination

800-214-4756 • Kevin Levesque • Lic. #B-1569

Bristol 860-582-6670 • Middletown 860-346-7760 • Newington 860-665-0874

LAWRENCE S. BRICK

ATTORNEY AT LAW

53 Oak Street

Suite 3

Hartford, CT 06106

THE SIMON FAMILY

Mel, Danielle,
Kira & Talia Simon
and
Ken, Pam &
Elena Simon
wish to
congratulate the
entire
**Emanuel
Congregation**
on the
celebration of
its **100th
Anniversary.**

We remember with Love

Harold M. Mondshein,

distinguished Ritual

Director, devoted

Teacher, and founder of

Emanuel Minyonaires,

and ASBC

(After Service Breakfast Club)

Gladys Mondshein

and Family



100 Years for The Emanuel Family
and
40 years of our family celebrations at
The Emanuel -

a wedding, Bar and Bat Mitzvah,
anniversary and birthday occasions
for the **Fine Family.**

We are grateful for our association
with such a special place.

מי שברך אבותינו אברהם יצחק ויעקב, הוא יברך את כל
הקהל הקדוש הזה...מי שמיחדים בתי כנסיות לתפלה, ומי
שבאים בתוכם להתפלל, ומי שנותנים נר למאור ויין לקדוש
ולהבדלה ופת לאורחים וצדקה לעניים, וכל מי שעושים
בצורכי צבור באמונה.

May He who blessed our fathers, Abraham, Isaac and Jacob,
bless all this holy congregation...May He bless those who unite
to form synagogues for prayer and those who come there to
pray; those who provide lamps for light and wine for *Kiddush*
and *Havdala*; food for visitors and charity for the poor; and all
who faithfully occupy themselves with the needs of the
community”

Congratulations on a century of service to the community!

The Chameides family

Innovation
steeped in
Tradition

The Jewish Community Foundation of
Greater Hartford brings together innovation
and tradition to transform our world.



*We extend a very happy anniversary to The Emanuel Synagogue!
Thank you for your many contributions to the spiritual, social,
musical and cultural growth of our community over the past 100 years.*



JEWISH
COMMUNITY
FOUNDATION

Zachs Campus | 333 Bloomfield Ave., Suite D | West Hartford, CT
860-523-7460 | jcfhartford.org

MAZEL TOV!

Greetings

Ellen Weingold

Mazel Tov to
The Emanuel
on its 100th
Anniversary

*Sue and Bruce
Bergman*

**Happy 100th
Anniversary
Emanuel
Synagogue**

**Happy & Healthy
Retirement
Cantor Cohn**

*Susan, Sam, Josh
& Sarah Cohn*

The Emanuel — Since '41

Our spiritual home for
four generations.
Learning, Teaching,
Youth Leadership, more.

So many wonderful
people and memories.

Prayer and Celebration
Singing and Service,
Marriage, B'nai Mitzvah.

We are so grateful.

*Ruth and Myron Weiner
and Family*

In Appreciation of the

- Clergy
- Executive Directors
- Staff
- Custodians

Who kept our lights shining

Brightly

For

100 years

***Michele & Alan,
Jordan & Tanushree,
and Lauren Parker***

In loving memory of
Jonathan Kronick

*Judith and Allen
Kronick*

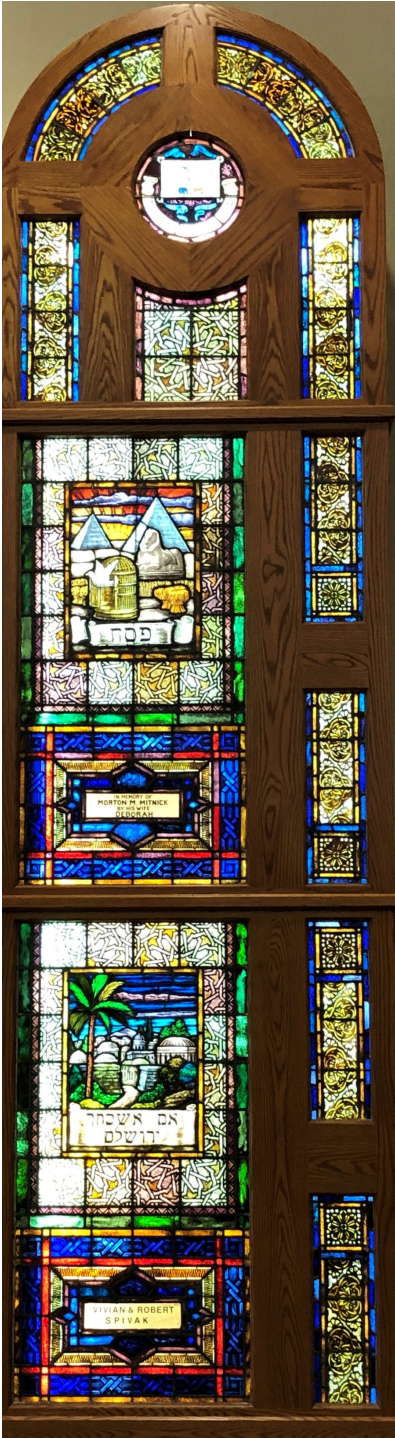
Looking back
at a hundred years
of history;

Looking forward to
a hundred more
years of continued
strength.

*The Berlin/
Gladstone Family*

Mazel Tov
Emanuel!

Llyn & Jeff
Kaimowitz



~ *L'Dor V'Dor* ~

From the
KOCH GOLDBERG
Family
Members since 1956

Susan & Paul Goldberg
Lance and Deborah
& Barak
David and Erica
Jack & Saul
Jeremy and Rachel
Hershel & Ilana

M'chayil El Chayil
Honoring our
past...

looking forward to
a wonderful
Emanuel future.

*Lisa, Michael,
Rebecca & Zach
Lenkiewicz*

The Fishman Family wishes to
congratulate

The Emanuel Synagogue
on its milestone

100th year anniversary.

Arthur z"l, Robert z"l,

and Edward Fishman,

along with their extended families

are proud to be a part of this

wonderful community and we all

look forward to our continued

relationship with our Synagogue

for many years to come.

Happy 100th Birthday
Emanuel Synagogue!

We appreciate all you do for
the Jewish Community.

Judd and Bella Fink

Congratulations
to
**The Emanuel
Synagogue**
on 100 Years
Strong!

*Muriel Hyne
and Family*

*Kol hakavod to
The Emanuel
Synagogue on 100
years of inspiring
leadership in the
Hartford Jewish
Community!
May it go from
strength to strength!*

*Stan Miller & Emily
Lebovitz-Miller*

Murtha Cullina is proud
to support the mission of

The Emanuel Synagogue

in its celebration of Jewish tradition,
values, personal growth and genuine
sense of community.

Edward B. Spinella
Murtha Cullina LLP
185 Asylum Street
Hartford, CT 06103
Tel: 860.240.6059
espinella@murthalaw.com

**MURTHA
CULLINA**
ATTORNEYS AT LAW

CONNECTICUT + MASSACHUSETTS + NEW YORK

MURTHALAW.COM



Simsbury Bank celebrates
The Emanuel Synagogue's
100th year.

Congratulations!



Simsbury Bank.

Bank this way.

Mortgage and Consumer Loans • Mobile Banking
Commercial Banking • Retirement Products
Checking and Savings Options

SimsburyBank.com
860.595.3244





“The whole is greater than the sum of its parts.”

Aristotle

“For I know the thoughts that I think about you, says the Lord,
thoughts of peace and not of evil, to give you a future and a hope.” Jeremiah 29:11

**Of the text of the past,
We were a bit of the last,
Of the text of next,
If with health we are blessed,
Perhaps we can score,
A little bit more.**

**לחוזק ולגדילה
To Strength and Growth**

*Jackie Isaacson
Lou Blumenfeld*

**Join Us As We Enter Our
Next 100 Years!**

Michael and Carolyn Levine
and family

Dina and Marc Nathan
Jessica, Joseph and Max

Marc Levine and Ronnie Grinberg
Paloma

Eliana and Joshua Weissman
Jonah and Simone

**Congratulations to
The Emanuel Synagogue on
celebrating 100 strong years!**

Alan and Marilyn Goodman

Our Best Wishes!

**Milikow Family
Geoghegan Family**



Our family's been answering the call for over 30 years.

Commercial Industrial Residential

284 Locust St. Hartford, CT 06114 Phone: 860.560.1200 Fax: 860.560.9101
rmacca@maccaplumbing.com www.maccaplumbing.com

Jeffrey Weingart

jjw1961@aol.com

3 Stuyvesant Lane
Smithtown, NY 11787

P: 631-766-5914
F: 631-979-6268

Dargene Provisions

For All Your Kosher Food Needs



AIR TEMP
MECHANICAL SERVICES INC.

Commercial • Industrial
Service • Sales



Jeff Leone
President



360 Captain Lewis Drive
Southington, CT 06489
jeff@ctairtemp.com

Office 860-953-8888
Fax 860-953-5877
www.ctairtemp.com



Daniel Barrieau
Co-Owner

8 Horseshoe Lane
Farmington, CT 06032

T 860.404.2838
C 860.874.4058

@DoorandSecuritySolutions.Com

COMMERCIAL DOOR & HARDWARE SPECIALISTS
SALES • INSTALLATION • CONSULTING • MAINTENANCE • REPAIR

WEINSTEIN

Mortuary

640 FARMINGTON AVENUE, HARTFORD, CONNECTICUT 06105
860 - 233-2675 • TOLL FREE: 877 - 233-2680
WEINSTEINMORTUARY@COMCAST.NET • WWW.WEINSTEINMORTUARY.COM



*Central Connecticut's
ONLY Jewish Funeral Home
A 79 year dedication to serving and honoring
the memories of families*

*For more information, Please visit our website:
www.weinsteinmortuary.com*



*Member of The Jewish Funeral Directors of America,
The Connecticut Funeral Directors Association,
The National Funeral Directors Association*



Cricket Press inc.

THINGS WE DO:

- Letterheads
- Envelopes
- Business Cards
- Digital Color Printing
- Carbonless Forms
- Brochures
- Booklets/Flyers
- Newsletters
- Reports
- Directories
- Color Printing
- Typesetting
- Invitations
- Mailing Services
- Crash Numbering
- Enlargement/Reduction
- Padding
- Raffle Tickets
- Labels
- High Speed Copying
- Wide Format Posters/Banners
- Folding
- Drilling
- Plastic Coil Binding
- Double O Wire Binding
- Clear/Leatherette Covers
- Stapling
- Die Cutting
- Laminating
- Rubber Stamps

Convenient Free Parking and Easy Loading Dock Access

236 Park Road, West Hartford, CT 06119

(860) 521-9279 FAX (860) 521-1079

www.cricketpress.net



DZEN COMMERCIAL
ROOFING, LLC

DZEN SHEET METAL
CONTRACTORS, INC.

Mike Dzen, Jr.

74 Ranney Street
East Hartford, CT 06108
Tel. (860) 528-4660
Fax. (860) 528-4961
mikejr@dzenroofing.com
www.dzenroofing.com

Industrial • Commercial



Remembering
our past...

Building our
future

Happy 100th
Anniversary

Chai Contributors

Lorraine & Tom Barber
Caryl Blum
Miriam Chaiklin
Rosalyn Darefsky
Angela Epstein
Barbara Faison
Michael & Judith Etelis Farber
Barbara Fishman
Estelle Freed
Beverly & Jay Gans
Ebner & Elizabeth Glooskin
Richard & Miriam Goldberg
Kayleen Goldstein
Steve & Ruth Graff
Frederic R. Green
Ellen Greene
Wilma Hoffman
Mitchell Jaffe
Rhoda Kaplan
Elaine Kaufmann
Rick & Bonnie Lasker
Margaret & Robert Lesser
Judy & David Levine
Judy & Richard Levy
Faith Levy
Arlan Lieblick
Michal Lowenstein
Maxine Marcus
Peter & Debbie Mehlman
Barbara & Howard z"l Nair
and family



Deborah & Kevin O'Connell
Simon Perlsweig
Gail Rappaport
Lenora Rosenblum
Susan Rosenstein
Alison, Jeff, Shayna,
& Aaron Rudolph
Harriet I. Samuels
David & Iris Sasportas
Harvey & Ellen Schiller
Philip & Karen Schlossberg
Steven & Elyse Slitt
Melton Spivak
Rhoda Steinberg
Shirley & Lewis Stengel
The Tulin & Cion Families
Dr. Leonard & Joan Weinberg
Bruce & Lesley Weiner and
family
Moshe & Deborah Zwang

Double Chai Contributors

Joseph & Agnes Bacher

The Emanuel has been special in our life

Paula & David Baram

Mazel tov to The Emanuel Synagogue on its Centennial Celebration!

Stephen & Barbara Berns

Happy 100th Emanuel! Happy retirement Hazzan Cohn

Harry & Roberta Berry

Happy to celebrate 100 years with The Emanuel Family

David, Lara, Benjamin, Samuel & Rebecca Bomzer

Mazel tov to The Emanuel!

Jeffrey & Jennifer Cohen and Family

Mazel tov on 100 years!

Joel & Fern Cohen and Family

Proud to be a member of The Emanuel

Josh, Evelyn, Jacob, & Madelyn Cohen

Mazel tov from the Cohen Family

Marshall Cohn

Good luck to the next 100 years

Congregation Kol Haverim

Mazel tov on your 100th year!

Al & Risa Davidson

Mazel tov and best wishes to our Emanuel family

Fay, Ernie, & David deHaas

Mazel tov on 100 years!

Joshua & Gwen and the entire Dunn Family

Thank you Cantor Cohn and best wishes

Elizabeth & Grant Ehrlich

With gratitude for this amazing community

Alfred & Nancy Fichman and Family

Our family - 5 generations - wishing The Emanuel community a hearty mazel tov

Michael & Evelyn Fishman

The Fishman family is proud to be part of The Emanuel Synagogue

Robert & Susan Fishman

Congrats to founding member families including the Schwolsky Family

Joyce Flescher

Mazel tov

Fred & Judge Fox

Mazel tov for the first 100 years

Margery Gassner and Family

Mazel tov

Tyba & Edwin Geller

Congratulations to our wonderful Emanuel family for reaching this impressive milestone



Lisa & David Gerrol

Congratulations to our Emanuel Synagogue on 100 years of service to the community

Cissy Schaller Glassman

Mazel tov!!

Gary & Christine Goetz

100! May we all live that long

Deborah, Lance, & Barak Goldberg

Proud to be 4th generation members!

Helen & Marvin Goldberg

Mazel tov to our first 100 years

Lori Gottlieb

Mazel tov

Helaine & Barry Hanenbaum

Mazel tov

The Henowitz Family

Honored to be part of The Emanuel's centennial and wishing all the best for the next 100 years!

Lotte Hershfield

Wishing for another 100 years

Seymour, Rhoda & Leonard Kaplan

In honor of the Emanuel Synagogue's 100 years

Syd & Karen Kaye

Mazel tov

Faye Krantz

In loving memory of Irv Krantz

Martin & Sylvia Lazarus

May you continue to grow from strength to strength

Sheila & Stephen Levy

In loving memory of Iris C. Rosenberg

Ken Malley

Happy 100! Love, The Malley Family

Ona & Tom Mastronarde

From strength to strength

Beatrice Mitlak

Mazel tov! May we continue from strength to strength

Beatrice Mitlak

Mazel tov! Wishing Cantor Cohn all good things in the future

Shirley Morrison & Family

Mazel tov!

Sandra & Michael Myers

Best wishes & here's to The Emanuel's 2nd century -
L'chaim! Mazel tov

Sandi & Marc Needelman

Wishing for another 100 years, or more!

Evelyn Nirenstein

Mazel tov on retirement to Cantor Cohn

Avra Novarr

Best of luck to Cantor Cohn!

Lee & Mort Oberstein

Mazel tov from Boynton Beach FL on this wonderful occasion

Reesa Olins & Robert Teitelman, Abby, & Jodi

Mazel tov! May our future be bright!

Audrey Sobel & Jeremy Pressman

Mazel tov!

Joanne Shimelman & Myron Raisner

Congratulations to The Emanuel for its vibrance and success

Barbara Reisner

Mazel tov - 100 years



Donald Rosenberg

In loving memory of my lifetime sweetheart Iris C. Rosenberg

Ann Rosenthal

Mazel tov on the synagogue's 100th anniversary!

Dr. Robert & Sandra Rudnicki

Mazel tov to 100 years of The Emanuel and to Cantor Cohn

Phyllis, Daina, & Brian Schatz and all our loved ones

Happy Bat/Bar Mitzvah memories. Happy Centennial!

Eileen & Mark Seiger

Mazel tov!

Edna & David Shamash and Family

Mazel tov on your 100th birthday

Tara & Bernard Shapiro, Dawn & Marshall Bein, Thani & Mitchell Lampert

In loving memory of Gloria M. Bein

The Sidrane Family

Mazel tov

David & Hilary Silver

Congratulations to The Emanuel for 100 years!

Hyla & Harry Sklar

Proud Emanuelites for 54 years

Barbara Snyder

Mazel tov and many more years

Carolyn, Sam, & Clara Sorkin

Mazel tov to The Emanuel community

Barbara & Gerald Sperber and Family

Mazel tov on the centennial. Onward to the bicentennial.

Marshall Soltz

Best wishes for continued success

Leonard Swade

Mazel tov

Lisa, Neil, Adam, Meg & Michael Tesser

Happy 100th Emanuel - Best wishes to Cantor Cohn

The Topol and Molinari Family

Mazel tov to The Emanuel Synagogue on its 100th birthday!!!

Janet Wallans

Congratulations to all of us

Sue & Marty Waterman

Congratulations to The Emanuel Family

Richard & Jill Welk

Congratulations...Here's to another 100 years!!

Marty & Audrey Yanofsky

Mazel tov on The Emanuel Synagogue's 100th birthday

Michael, Beverly, Renee, Keith, Sean & Heather Zetoff

Mazel tov to The Emanuel Family, 100 years!

Joy Of Food, LLC

Kosher Accommodating/Catering

Paul & Debbie Bettan

27 Timberwood Road
West Hartford, Connecticut 06117
Phone: (860) 231-1861
Cell: (860) 798-9388
E-mail: joyoffood@comcast.net
www.joyoffood.net



CRUISE PLANNERS



TRAVEL

Luxury TRAVEL SPECIALIST

Fay E dehaas CTA MCC

860-206-8244

fdehaas@cruiseplanners.com

<https://www.kreativeworldcruises.com/>

YOUR LAND AND CRUISE EXPERT



CASIA
Computer Aided System & System Integration Associates



JOEL P. KENT

425 WINDSOR AVENUE • WINDSOR, CT 06095
(860) 246-0001 • Fax: (860) 246-9070
WWW.FBNSECURITY.NET

CT Lic. #106132 • MA Lic. #384C • NYS UID #12000010524

Kids Kippot

www.kidskipot.com
info@kidskipot.com

Elizabeth Ehrlich
(860) 202-9595

Some voices sing with clarity

Some voices teach with confidence

Some voices encourage with caring

Few voices can do it all...

I wish all the very best that retirement can offer

to a special friend

Cantor Sandy Cohn

from Judy Silver

*L'Dor
va Dor*

Janice and
Sydney
Elkin

With so much
love and
appreciation for
our Emanuel
family-100 years
strong

*Randie & Eliot
Fierberg
Ruthie, Joseph &
Emma*

The Emanuel Synagogue

Our wonderful Jewish home for
so many years

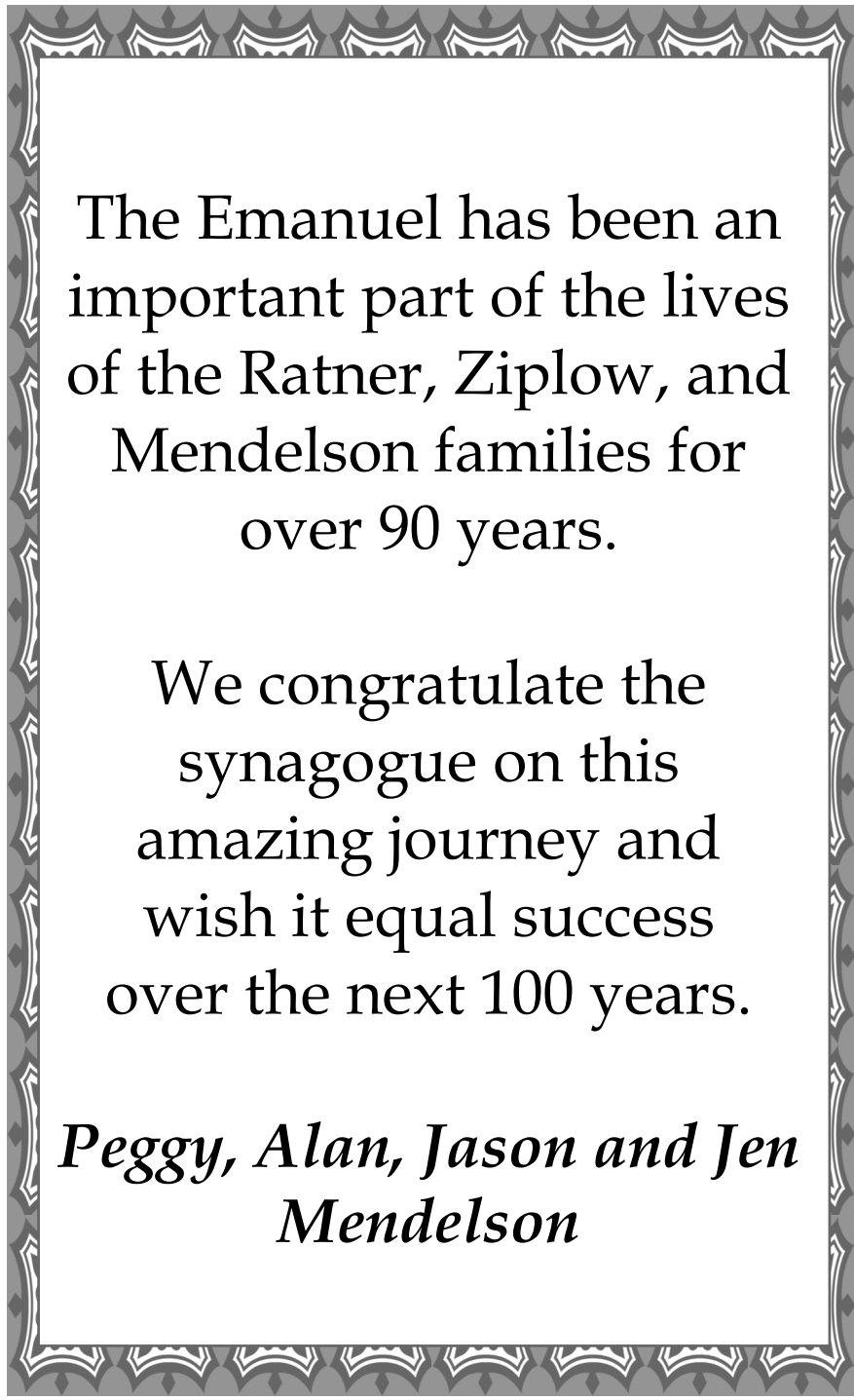
May it be so for many people
for at least another 100 years

Drs. Regina and Donald Miller

This was a favorite teaching of Rabbi Tarfon:

*“You are not obliged to finish the task,
Neither are you free to neglect it.”*

Pirkei Avot 2:21



The Emanuel has been an important part of the lives of the Ratner, Ziplow, and Mendelson families for over 90 years.

We congratulate the synagogue on this amazing journey and wish it equal success over the next 100 years.

Peggy, Alan, Jason and Jen Mendelson

**Congratulations
on 100 great
years!**

**Looking forward
to many more!**

*The Amblo/
Glucksman
Family*

**In Honor and Memory of
Paul and Libby Wolfberg**

Paul Wolfberg, Past President,
Beth Hillel Synagogue

Libby Wolfberg, Past Beth Hillel
Sisterhood Cantor

The Beth Hillel Libby and Paul
Wolfberg Entertainment Fund



In Memory of

Jacob and Anna Berson

Robert and Vivian Spivak

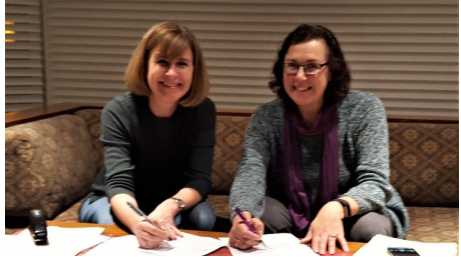
Jacob and Rosiland Galinsky

Simeon and Delores Horwitz

HISTORY - PART V of V

Welcome Beth Hillel Members

In 2018, Beth Hillel Synagogue, a vibrant Conservative congregation in Bloomfield since 1952, merged with The Emanuel Synagogue. The merger between the two congregations was a natural fit -- both shared long and meaningful legacies, a passion for upholding Jewish traditions, a love of community, and devotion to service. Additionally, the communities shared many members and a Rabbi Emeritus, Rabbi Philip Lazowski.



For The Record:

Some Emanuel recollections need a separate shining spotlight. The following are notable points in The Emanuel historical narrative.

- Some nationally known members of The Emanuel congregation not mentioned earlier include Sophie Tucker, the famous singer/comedian/actress, who became a member in 1933, and is buried in The Emanuel cemetery. Later, in 1959, Governor and Mrs. Abraham Ribicoff became members of The Emanuel.
- The school's history included a champion basketball team! In 1953, The Emanuel Basketball Team won the Championship of the Synagogue Basketball League. This was the first of many subsequent championships for the team.
- A monumental advancement occurred in 1962, when The Emanuel became the first Conservative congregation in the nation to alter its constitution allowing women to serve as members of the Board of Trustees. The Board of Trustees and its presidents are unarguably the epitome of devotion to all Jewish principles. Their endeavors allowed the congregation to flourish and provide for Jews and their community for the last 100 years.
- The third arm of The Emanuel (other arms include Sisterhood and Brotherhood), the Minyonaires, began in 1980, under the leadership of Ritual Director Harold Mondschein z"l as a kosher "breakfast club" to ensure that daily prayer and ritual services continued.

- The acclaimed Emanuel religious school has won multiple Solomon Schechter Awards for Family Education, as well as the Innovative Family Education Program Award. In 2004, the school was the recipient of a three-year grant from The Legacy Heritage Innovation Project. In 2012, The Early Childhood Center opened. It is a dedicated space for families with very young children to interact for Jewish activities and learning.
- The Emanuel congregant Gloria Bein z"l graced our Shabbat service by chanting *Haftorah* more than 200 times. She was an inspirational fixture for the community as she organized display cases, sent good wishes, and hand-wrote notes to many. She was also the ultimate archivist of The Emanuel history.
- As a Jewish congregation, *Tikun Olam* is stressed and practiced by providing food, clothing and monetary contributions to those in need. Whether it was the many past funds and clothing drives for Jews in Russia and later Europe after WWII, or supplying our servicemen, or helping newly arrived immigrants, our history provides countless efforts of donations and involvement. Our current *B'Yadeynu* Social Action Committee continues this tradition.

The Emanuel's 100 Year Journey

From being the first Conservative synagogue in CT, to being the first Conservative synagogue in the nation to allow women to serve on its board of trustees, to having many distinguished rabbis, cantors, and educators, The Emanuel has always been a beacon for Conservative Judaism. It has provided a vibrant Jewish history of modern interpretations for religious observances and traditions as an egalitarian institution.

The Emanuel Synagogue includes multi-generational families who have carried on the traditions of its founders and newer congregants who have introduced a vibrancy that provides for continuation of an inspirational community.

As we look forward to the years ahead, our congregation welcomes and includes all in our community wanting to practice religious traditions, to continue Jewish learning, to practice *Tikun Olam*, and to perpetuate a love of Israel.

We look forward to The Emanuel's next 100 years and beyond.
L'Dor Va'dor.

Emanuel Synagogue Board of Trustees

1927



2019



The Brotherhood, Sisterhood,
and Minyonaires
would like to wish

The Emanuel Synagogue

Mazal Tov on 100 years of
providing us with a home filled
with learning, community, and
spiritual guidance.

May you continue to go from
strength to strength for another
100 years.

In Tribute to the Vision of our Founders

Eleanor Neiditz Caplan





We applaud the
Emanuel Synagogue on
its Centennial Year

Ledger@90

Local, National & World News & Information since 1929

Digital & Print Publications / jewishledger.com / #Ledgerat90 / 860.231.2424

Contact: Donna Edelstein, Senior Account Executive, donnaE@ledgerpublications.com

PROUD TO SERVE YOU OVER THE YEARS



2471 Albany Ave. West Hartford
860.236.1965
thecrownmarket.com

SUPPORTED BY THE ZACHS FAMILY FOUNDATION



Congratulations to
The Emanuel Synagogue Family
for 100 years of spiritual leadership
in the community.

The Lazowski children honor their
parents and grandparents.

Rabbi Philip and Ruth Lazowski

for their exemplary service and
dedication to the Greater Hartford
Jewish Community for over 6 decades.

With love and appreciation,

Alan and Marcia
Barry and Cindy
David and Dana
Jesse, Jonah, Alexa, Elizabeth,
Mikayla, Ari, and Jenna



*Celebrating 100 years
of The Emanuel*

and

**Congratulations to Cantor
Sandy Cohn**



Elaine and Howard Smith

Heidi and David Konesko

Christine and Michael Smith
Kaitlin and Jason

Kimberly and Troy Harbour
Emma, Zoe and Skyler



May we all go from
strength to strength.



*We are third generation members
of The Emanuel Synagogue
and very proud of it.*

*May our synagogue go from
strength to strength!*

Arlene & Daniel Neiditz